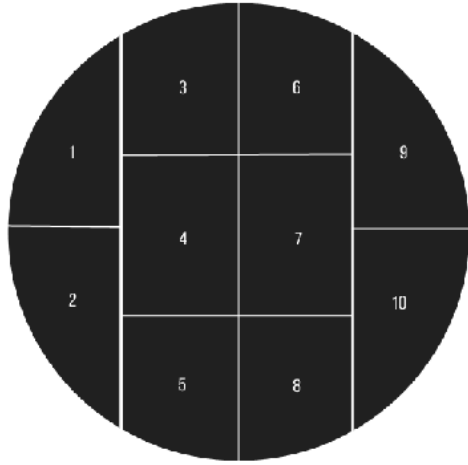
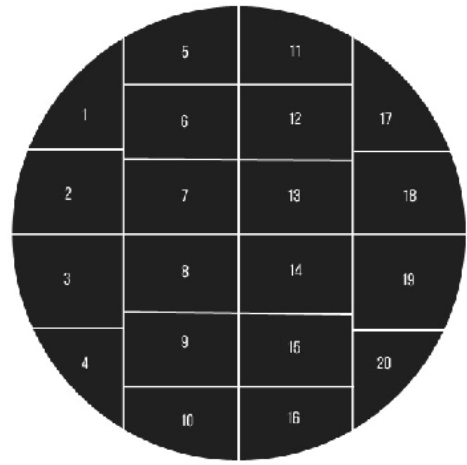


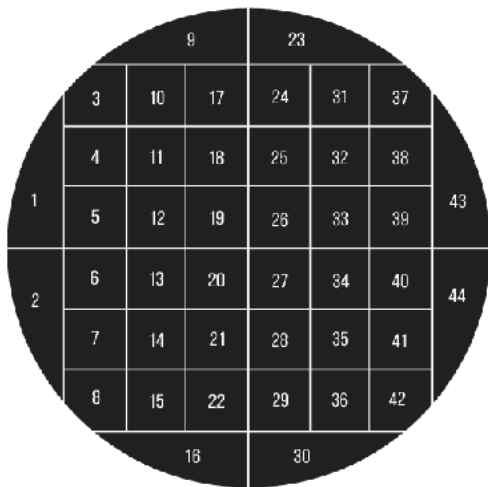
# WHISK



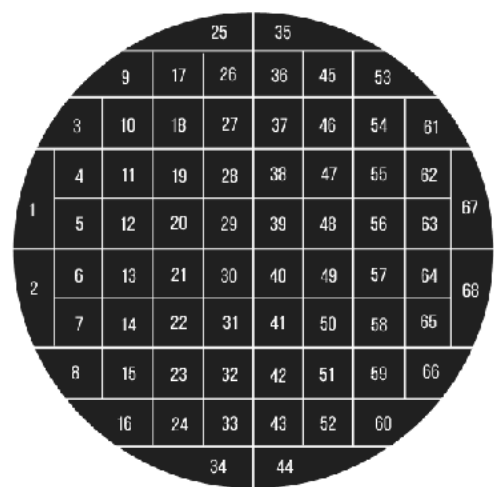
**4 inches (10cm) cake**  
10 tall slices || 20 treat slices



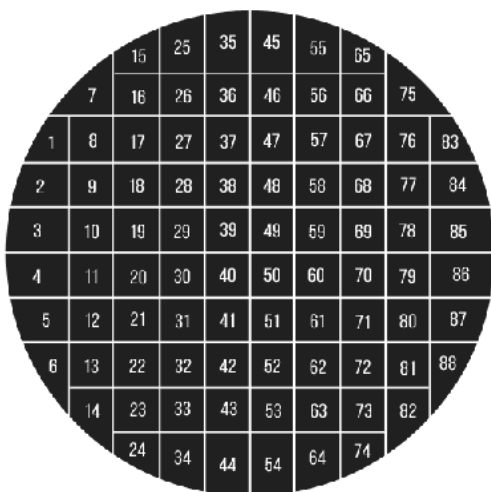
**6 inches (15cm) cake**  
20 tall slices || 40 treat slices



**8 inches (20cm) cake**  
44 tall slices || 88 treat slices



**4 inches (25cm) cake**  
68 tall slices || 136 treat slices



**12 inches (30cm) cake**  
88 tall slices || 176 treat slices



**Tall Slice**



**Treat Slice**

## CUTTING GUIDES

These offer examples of how to get the most slices out of our tall 4 layer cakes. The slices are around 1 inch (2.5cm) square as either Tall or Treat sized.

Please use the curved edges, we want to avoid food waste and they taste just as good as the perfect square slices